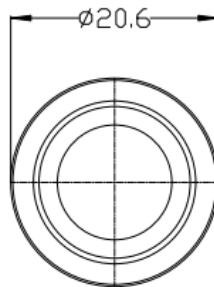
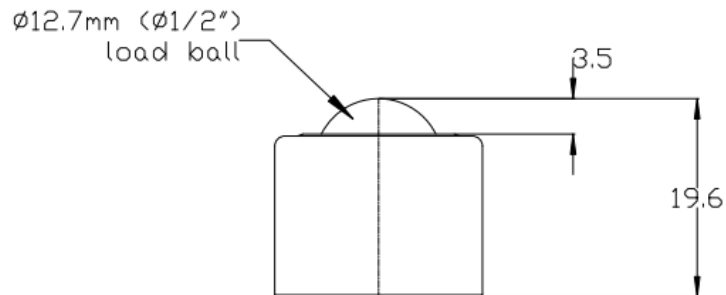




7101 DATASHEET



General tolerance unless stated +/-0.3mm

REF No.	BALL SIZE (mm)	WEIGHT (kgs)	MAXIMUM DIAMETER (mm)	WORKING HEIGHT OF BALL (mm)	BALL EXPOSURE ABOVE OUTER RING (mm)
7101	Ø12.7	0.036	Ø20.6	19.6	3.5

MAXIMUM DYNAMIC LOADING – BALL UP

Type 13 Chrome steel balls and carbon steel body 35kgs ball up

MATERIALS

Body - Carbon steel with chemical black finish

Balls – AISI52100 chrome steel with hardness of 60 - 65HRC self colour finish

KEY FEATURES

Small compact unit with cnc machined body

Unit assembled with no seal as standard

Maximum operating temperature of 70°C continuous or 100°C intermittent