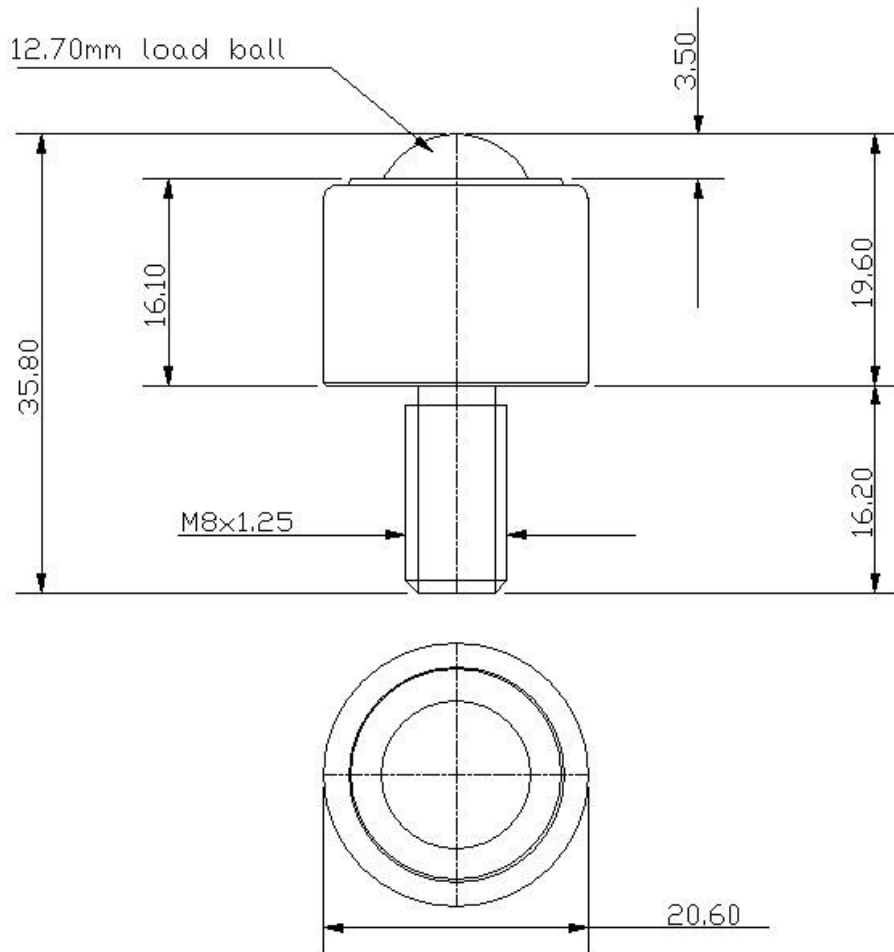


## 7106-13 DATASHEET



REF No.	BALL SIZE	WEIGHT	MAXIMUM DIAMETER	WORKING HEIGHT OF BALL	BALL EXPOSURE ABOVE OUTER RING	THREAD SIZE	THREAD LENGTH
7106-13	Ø12.7mm	0.042kgs	Ø20.6mm	19.6mm	3.5mm	M8 x 1.25mm	16.2mm

### MAXIMUM DYNAMIC LOADING – BALL UP

Type 13 Carbon steel 35Kg

### MATERIALS

Carbon steel body with chemical black finish

Carbon steel balls

### KEY FEATURES

M8 screw thread for fixing purposes.

Body and screw thread are machined in one piece for added strength.

Unit is assembled with no seal.