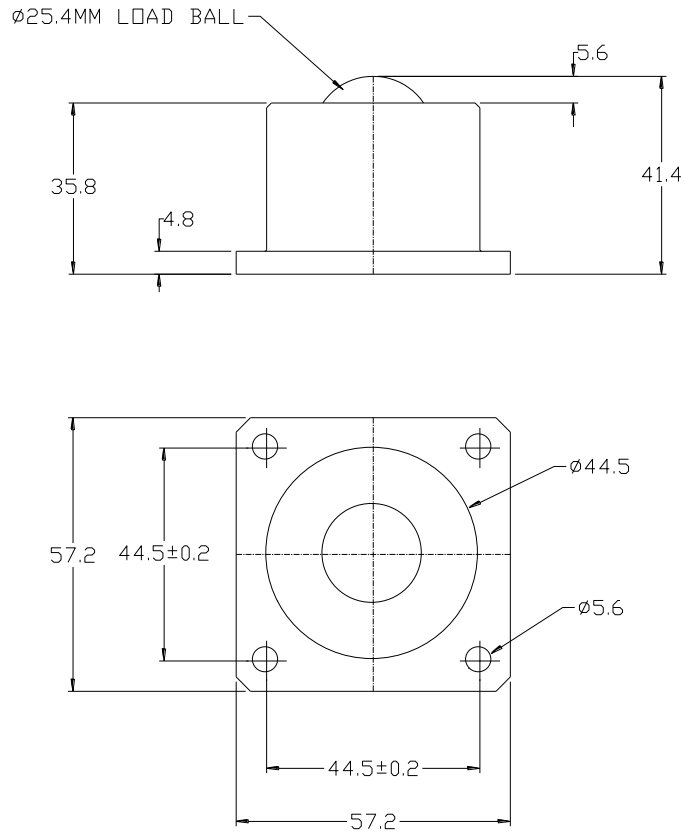




### 7122 DATASHEET



General tolerance unless stated  $\pm 0.3$ mm

REF No.	BALL SIZE (mm)	WEIGHT (kgs)	MAXIMUM DIAMETER (mm)	WORKING HEIGHT OF BALL (mm)	BALL EXPOSURE ABOVE OUTER RING (mm)	FLANGE THICKNESS (mm)	HOLE CENTRES (mm)	HOLE DIAMETER (mm)	FLANGE LENGTH (mm)
7122	$\varnothing 25.4$	0.459	$\varnothing 44.5$	41.4	5.6	4.8	$44.5 \pm 0.2$	$\varnothing 5.6$	57.2

#### MAXIMUM DYNAMIC LOADING – BALL UP & BALL DOWN

Type 13 Carbon steel balls and body - 250kgs

#### MATERIALS

Body - Carbon steel with chemical black finish

Balls – AISI52100 chrome steel with hardness of 60 - 65HRC and self colour finish

Seal - Woollen felt oiled with ISO 68 oil

#### KEY FEATURES

Strong solid steel construction.

Works equally well ball up, ball down or ball sideways.

Maximum operating temperature 100° C