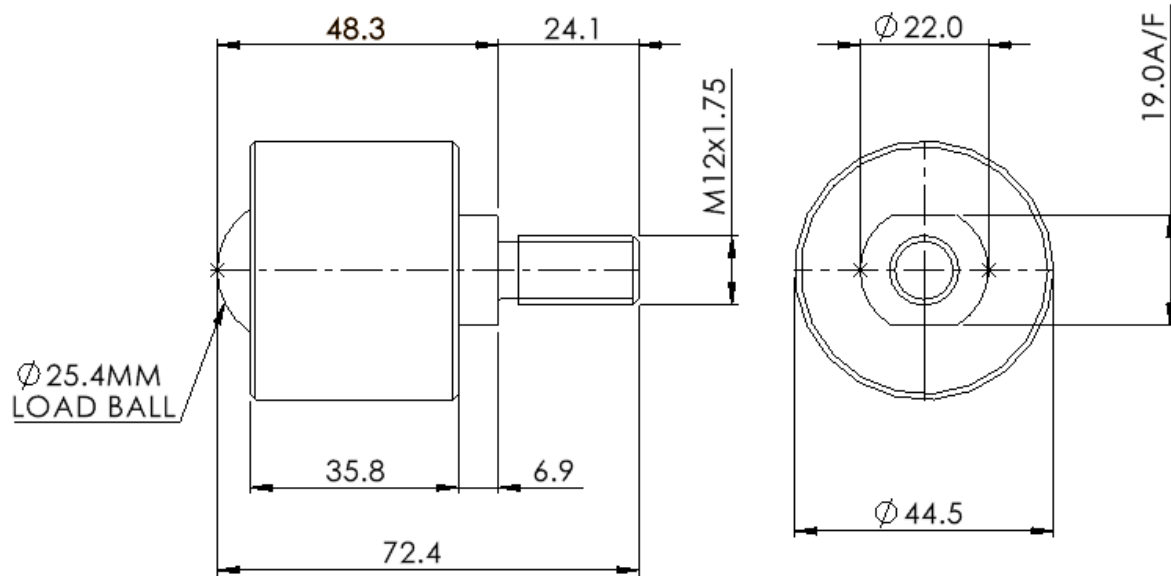




# ALWAYSE

## Ball Unit Solutions

### 7128 DATASHEET



General tolerance unless stated +/-0.3mm

REF No.	BALL SIZE (mm)	WEIGHT (kgs)	MAXIMUM DIAMETER (mm)	WORKING HEIGHT OF BALL (mm)	OVERALL LENGTH (mm)	THREAD SIZE	THREAD LENGTH (mm)
7128	Ø25.4	0.431	Ø44.5	48.3	72.4	M12 x 1.75	24.1

#### MAXIMUM DYNAMIC LOADING – BALL UP & BALL DOWN

Type 13 Carbon steel and chrome steel balls 250kgs

#### MATERIALS

Body - Carbon steel body with EP black finish

Balls – AISI52100 chrome steel balls hardened to 60-65HRC self colour finish

Seal - Woollen felt oiled with ISO68 oil

#### KEY FEATURES

Strong solid steel construction.

M12 screw thread for fixing purposes.

Works equally well ball up, ball down or ball sideways.