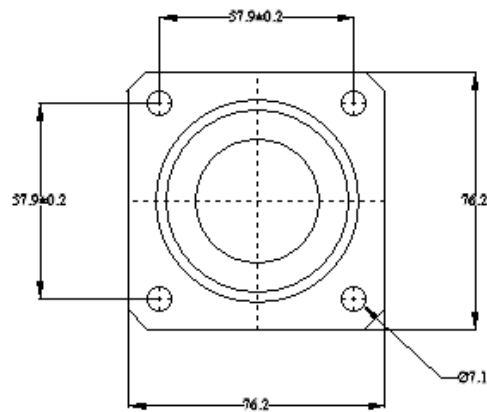
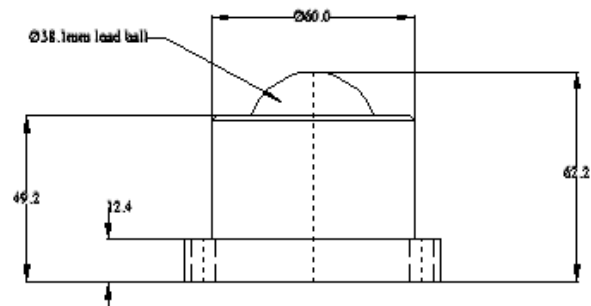




ALWAYSE

Ball Unit Solutions

7151 DATASHEET



General tolerance unless stated +/-0.3mm

REF No.	BALL SIZE (mm)	WEIGHT (Kgs)	MAXIMUM DIAMETER	WORKING HEIGHT OF BALL	FLANGE THICKNESS	HOLE SIZE	HOLE CENTRES	FLANGE SIZE
7151	Ø38.1	1.3	Ø60.0	62.2	12.4	7.1	57.9 +/- 0.2	76.2

MAXIMUM DYNAMIC LOADING – BALL UP, BALL DOWN AND BALL SIDEWAYS

Type 13 Carbon Steel Bearings 1,000kgs

MATERIALS

Body – EN1A carbon steel body with chemically blacked finish

Balls – AISI52100 chrome steel with hardness of 60 – 65HRC self-colour finish

Seal – Woollen felt oiled with ISO68 oil

KEY FEATURES

Works equally well ball up, ball down and ball sideways

High load capacity

Strong solid steel construction with flange and body CNC machined from one piece of steel

Maximum operating temperature 70°C continuous and 100°C intermittent