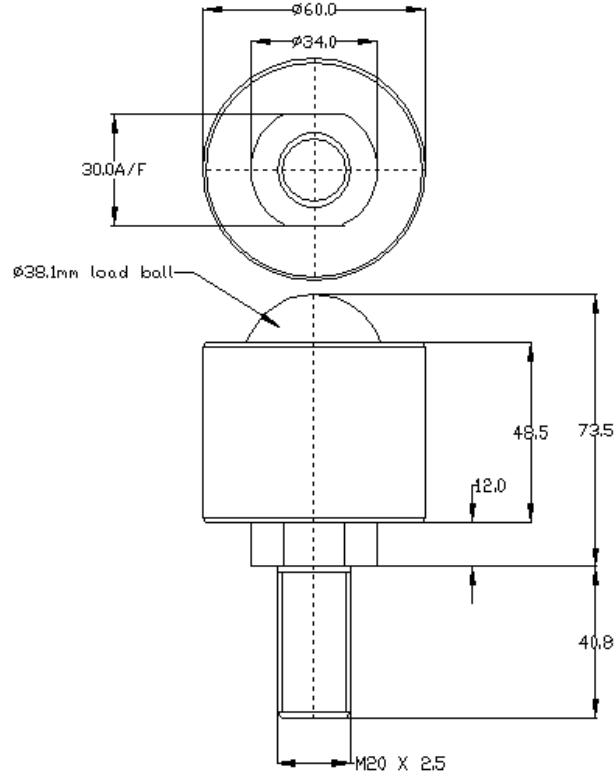




ALWAYSE

Ball Unit Solutions

7153 DATASHEET



General tolerance unless stated +/-0.3mm

REF No.	BALL SIZE (mm)	WEIGHT (kgs)	MAXIMUM DIAMETER (mm)	WORKING HEIGHT OF BALL (mm)	BASE TO TOP OF BODY (mm)	THREAD SIZE	LENGTH OF THREAD (mm)
7153	Ø38.1	1.14	Ø60	73.5	48.5	M20 x 2.5	40.8

MAXIMUM DYNAMIC LOADING – BALL UP & BALL DOWN

Type 13 Steel body and chrome steel bearings 1,000kgs

MATERIALS

Body and screw M20 thread –

Steel with chemical black finish

Balls –

AISI52100 chrome steel with hardness of 60 – 65HRC self colour finish

Load pad –

Steel with hardness of 60HRC self colour finish

Seal -

Woollen felt oiled with ISO68 oil

KEY FEATURES

Completely cnc machined from solid steel for strong construction.

Works equally well ball up, ball down or ball sideways.

Maximum operating temperature +70°C continuous +100°C intermittent