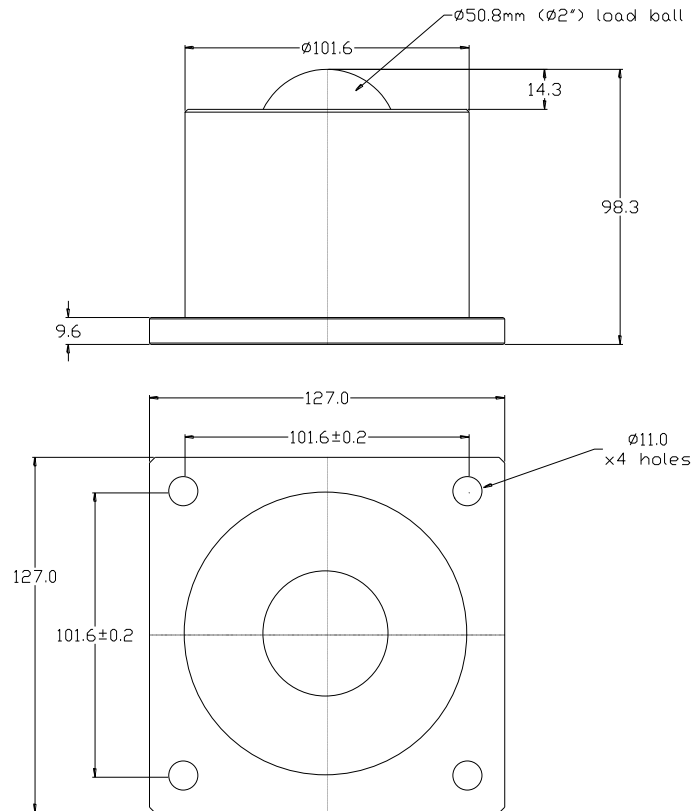


717416 DATASHEET



REF No.	BALL SIZE (mm)	WEIGHT (kgs)	MAXIMUM DIAMETER (mm)	WORKING HEIGHT OF BALL (mm)	BALL EXPOSURE ABOVE OUTER RING (mm)	FLANGE THICKNESS (mm)	HOLE CENTRES (mm)	FIXING HOLE DIAMETER (mm)	FLANGE SIZE (mm)
717416	$\phi 50.8$	5.52	$\phi 101.6$	98.3	14.3	9.6	101.6 +/- 0.2	$\phi 11$	127.0

MAXIMUM DYNAMIC LOADING – LOAD UP AND LOAD DOWN

Type 16 Stainless Steel Bearings 1,330kgs

MATERIALS

Body - Carbon steel with electrophoretic black finish

Small balls – Stainless steel AISI420C balls with hardness of 52 – 58HRC self-colour finish

Seal - Woollen felt seal

KEY FEATURES

High load capacity

Works equally well load down in the inverted position with no change in the dynamic load rating

High corrosion resistant electrophoretic black finish on body

Solid steel robust construction

Maximum operating temperature 70°C continuous to 100°C intermittent