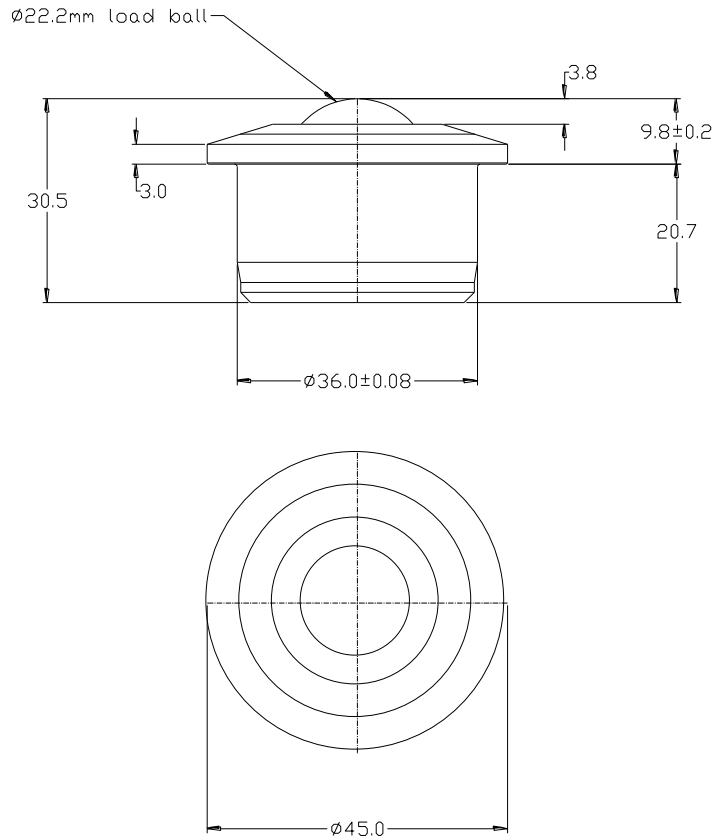


## 8002213 DATASHEET



PART No.	BALL SIZE (mm)	WEIGHT (kgs)	MAXIMUM DIAMETER (mm)	WORKING HEIGHT OF BALL (mm)	BALL EXPOSURE ABOVE OUTER RING (mm)	BODY DIAMETER (mm)	FLANGE THICKNESS (mm)	OVERALL HEIGHT (mm)
8002213	Ø22.2	0.18	Ø45.0	9.8 +/- 0.2	3.8	Ø36.0 +/- 0.08	3.0	30.5

### MAXIMUM DYNAMIC LOADING – BALL UP

Type 13 Carbon Steel Bearings 180kgs

### MATERIALS

Body - Carbon steel with zinc plated finish

Balls - Carbon steel with hardness of 60HRC and self colour finish

Seal - Woollen felt seal

### KEY FEATURES

Single dirt exit hole

Low profile

Strong solid steel CNC precision machined body construction

Maximum operating temperature 70°C continuous, 100°C intermittent