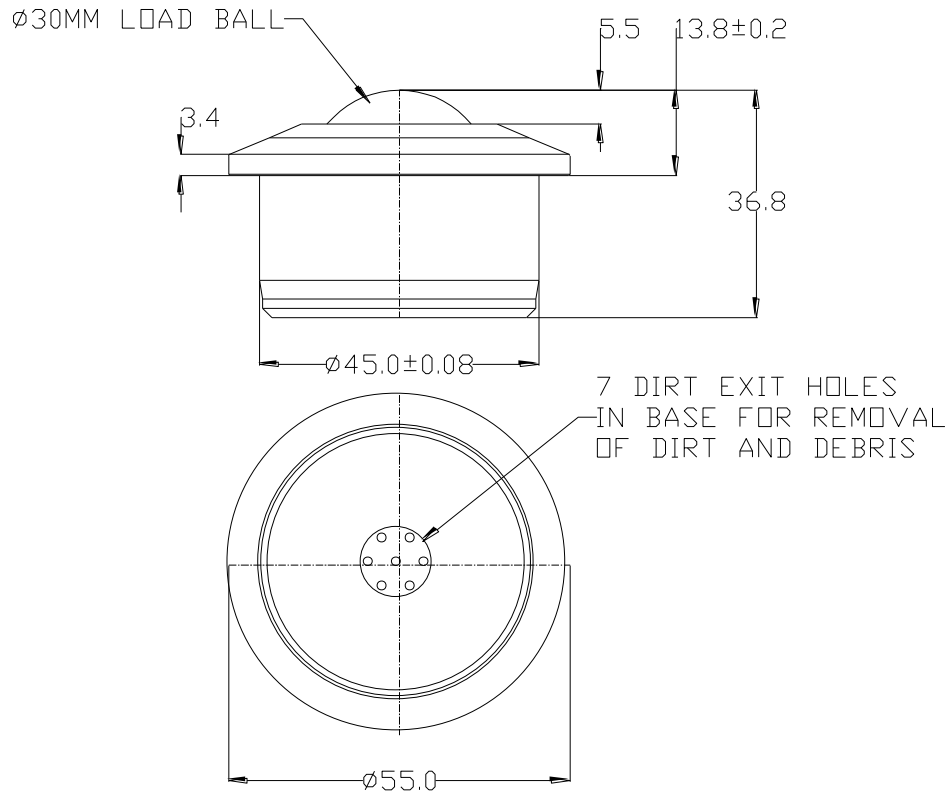


8053013 DATASHEET



PART No.	BALL SIZE (mm)	WEIGHT (kgs)	MAXIMUM DIAMETER (mm)	WORKING HEIGHT OF BALL (mm)	BALL EXPOSURE ABOVE OUTER RING (mm)	BODY DIAMETER (mm)	FLANGE THICKNESS (mm)	OVERALL HEIGHT (mm)
8053013	$\varnothing 30$	0.38	$\varnothing 55$	13.8 +/- 0.2	5.5	$\varnothing 45 \pm 0.08$	3.4	36.8

MAXIMUM DYNAMIC LOADING – BALL UP

Type 13 Carbon steel body and bearings 350kgs

MATERIALS

Body - Carbon steel with zinc plated finish

Outer ring – Carbon steel with zinc plated finish

Balls - Carbon steel with hardness of 60HRC and self colour finish

KEY FEATURES

Strong solid steel construction

Multi-dirt exit holes in base for removal of dirt and debris

Maximum operating temperature 70 C continuous or 100 C intermittent