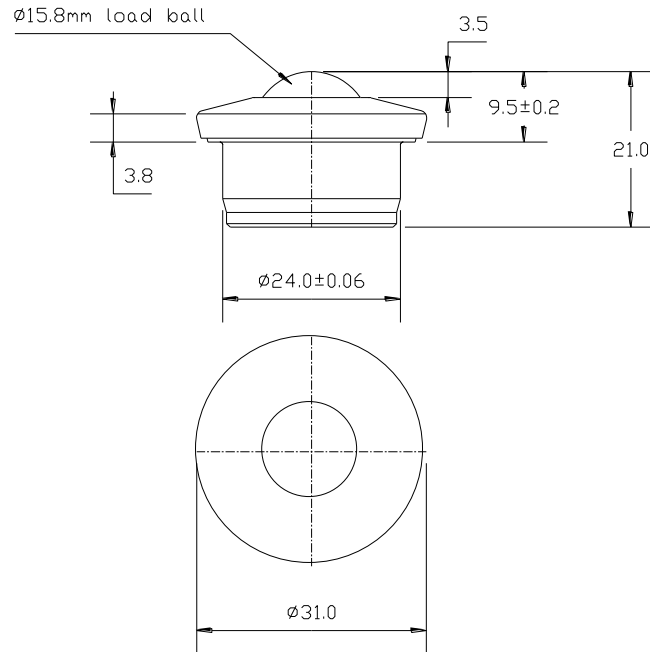




## 8101513 DATASHEET



PART No.	BALL SIZE (mm)	WEIGHT (kgs)	MAXIMUM DIAMETER (mm)	WORKING HEIGHT OF BALL (mm)	BALL EXPOSURE ABOVE OUTER RING (mm)	BODY DIAMETER (mm)	FLANGE THICKNESS (mm)	OVERALL HEIGHT (mm)
8101513	$\varnothing 15.8$	0.06	$\varnothing 31.0$	9.5 +/- 0.2	3.5	$\varnothing 24.0$ +/- 0.06	3.8	21

### MAXIMUM DYNAMIC LOADING – BALL UP

Type 13 Carbon Steel Bearings 70kgs

### MATERIALS

Body - Carbon steel with zinc plated finish

Balls – AISI52100 chrome steel with hardness of 60 - 65HRC and self colour finish

### KEY FEATURES

Single dirt exit hole

Assembled with no seal as standard

Low profile

Strong solid steel CNC precision machined body construction

Maximum operating temperature 70°C continuous, 100°C intermittent