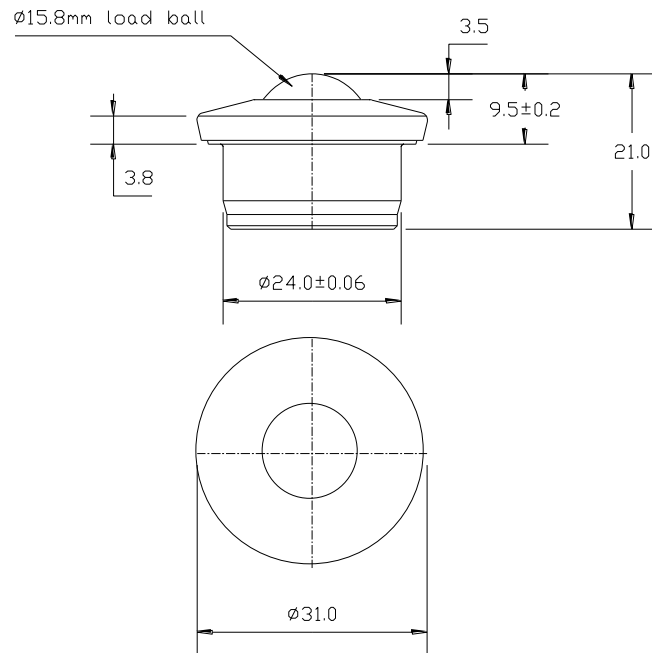


8101516 DATASHEET



PART No.	BALL SIZE (mm)	WEIGHT (kgs)	MAXIMUM DIAMETER (mm)	WORKING HEIGHT OF BALL (mm)	BALL EXPOSURE ABOVE OUTER RING (mm)	BODY DIAMETER (mm)	FLANGE THICKNESS (mm)	OVERALL HEIGHT (mm)
8101516	Ø15.8	0.06	Ø31.0	9.5 +/- 0.2	3.5	Ø24.0 +/- 0.06	3.8	21

MAXIMUM DYNAMIC LOADING – BALL UP

Type 16 Carbon Steel body and stainless steel bearings 70kgs

MATERIALS

Body - Carbon steel with zinc plated finish

Balls – Stainless steel AISI420C with hardness of 52 - 58HRC and self colour finish

KEY FEATURES

Single dirt exit hole

Assembled with no seal as standard

Low profile

Strong solid steel CNC precision machined body construction

Maximum operating temperature 70°C continuous, 100°C intermittent