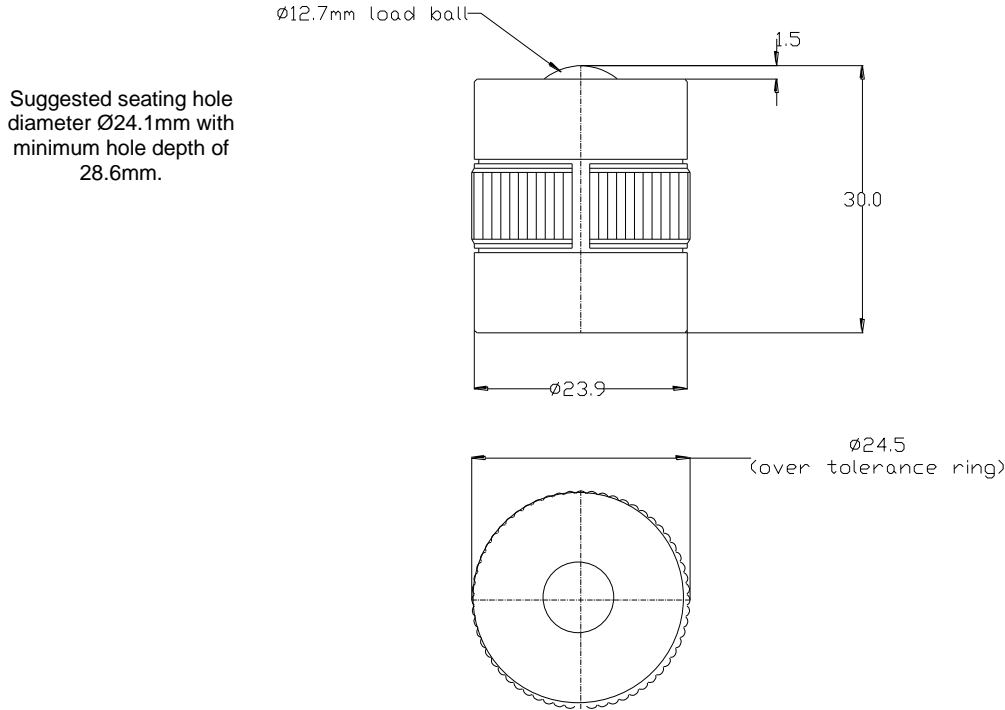




9DL2413 DATASHEET



REF No.	BALL SIZE (mm)	WEIGHT (kgs)	MAXIMUM DIAMETER (mm)	WORKING HEIGHT OF BALL (mm)	BALL EXPOSURE ABOVE OUTER RING (mm)	BODY DIAMETER (mm)	BASE TO TOP OF BODY (mm)
9DL2413	$\varnothing 12.7$	0.074	$\varnothing 24.5$	30	1.5	$\varnothing 23.9$	28.5

MAXIMUM DYNAMIC LOADING – BALL UP

Type 13 Carbon steel Support load 40kgs, Load for maximum deflection 90kgs

MATERIALS

Body - Carbon steel with chemical black finish

Tolerance ring – Stainless steel with self colour finish

Balls - Carbon steel with hardness of 60HRC and self colour finish

KEY FEATURES

Spring loaded to allow loads to be clamped down.

Tolerance ring for interference fitting.

Greater shock loading protection.

Unit is assembled with no seal as standard.

Maximum operating temperature of 70°C continuous or 100°C intermittent