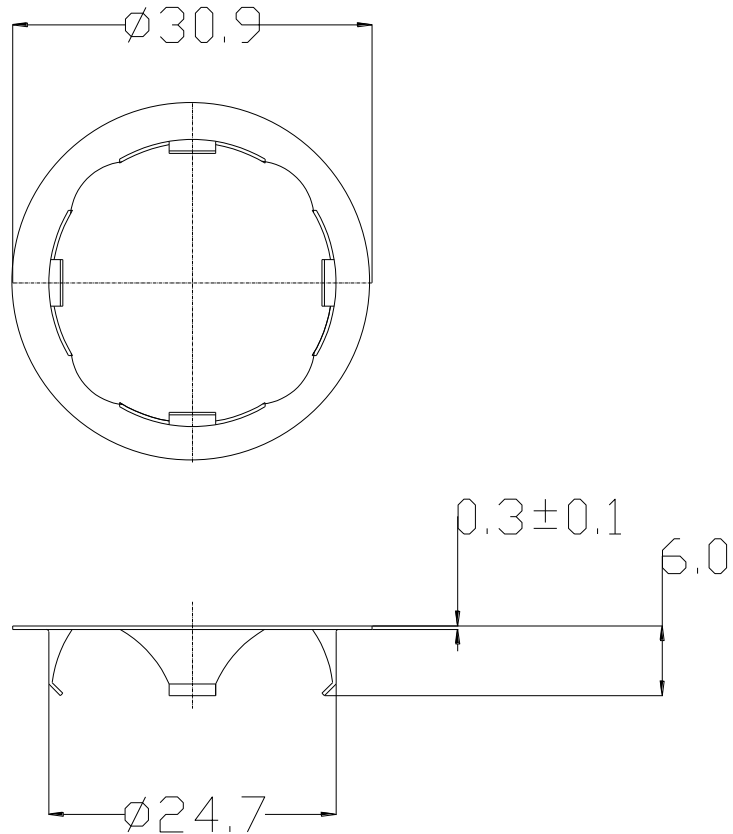


CL1415 DATASHEET



General tolerance unless stated +/-0.3mm

REF No.	WEIGHT (kgs)	FLANGE DIAMETER (mm)	BODY DIAMETER (mm)	LENGTH (mm)	MATERIAL THICKNESS (mm)
CL1415	0.001	$\varnothing 30.9$	$\varnothing 24.7$	6.0	0.3

MATERIALS

Clip – Carbon steel with zinc plated finish

KEY FEATURES

Low profile.

Easy fixing of ball units with $\varnothing 24$ mm body diameter from above table top.

Recommended seating hole diameter of $\varnothing 25$ mm – $\varnothing 25.5$ mm.

Table top material thickness of 3mm.