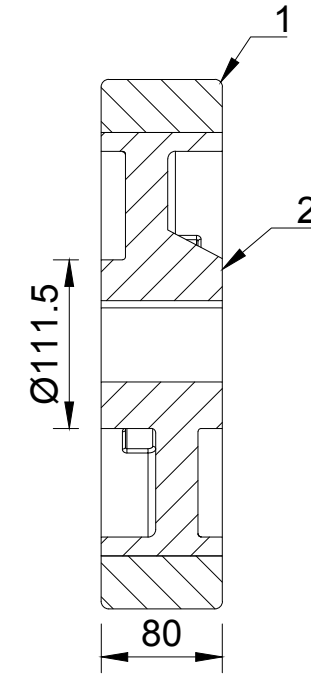
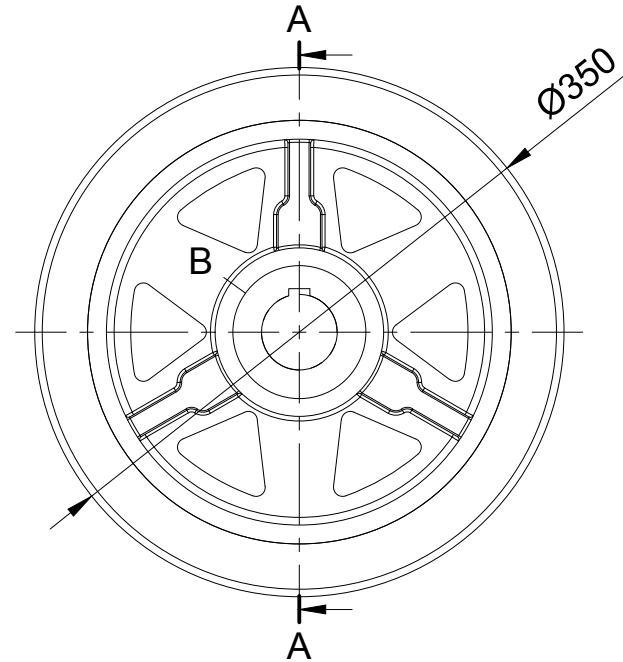
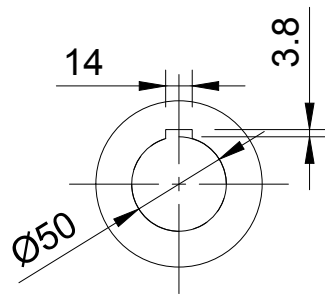




ITEM NO.	PART NUMBER	QTY
1	VULKOLLAN POLYURETHANE TYRE	1
2	CAST IRON RIM	1



A-A (1:5)



B (1:4)

UNLESS OTHERWISE SPECIFIED DIMENSIONS ARE IN MILLIMETRES  Unspecified Tolerances Machining ± 0.25mm Fabrication ± 1mm	<b>DRAWING DISCLAIMER</b>  COPYRIGHT OF THIS DRAWING IS RESERVED BY BIL GROUP LTD. IT IS NOT REPRODUCED, COPIED, OR DISCLOSED TO A THIRD PARTY EITHER WHOLLY OR IN PART WITHOUT THE CONSENT IN WRITING OF BIL GROUP LTD	<b>NAME</b> Matt	<b>DATE</b> 23/04/25	 BIL Group Ltd Porte Marsh Road Calne, Wiltshire, SN11 9BW United Kingdom Tel +44 (0)1249 822 222 www.bilgroup.co.uk	 H Varley Ltd Unit 5 Century Park Pacific Rd, Broadheath, Altrincham, Cheshire WA14 5BJ Tel +44 (0)161 928 9617 www.varley-castors.co.uk
		<b>DRAWN BY</b> Matt	<b>DATE</b> 23/04/25		
		<b>APPROVED BY</b> Kevin	<b>DATE</b> 23/04/25	<b>DWG NO.</b> VULW350-80-80-KM50	<b>REV</b> 1
		<b>SCALE</b> 1:5		<b>VULW350-80-80-KM50</b>	<b>SHEET 1 OF 1</b>
		<b>WEIGHT</b>			